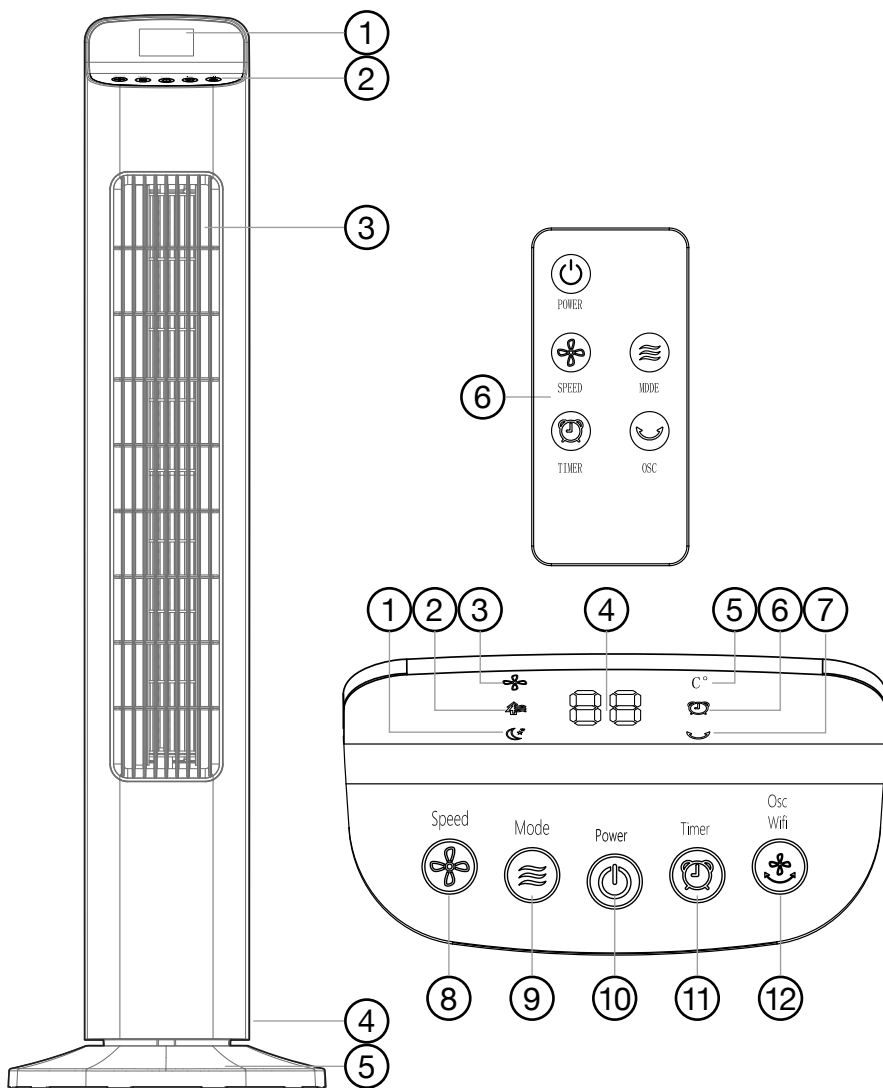


www.blackanddecker.co.uk

BXFT50008GB



What's in the box

Fan Tower
Fan Base Halves x2
Base Screw Lock
Remote Control
Instruction Manual

Features

1. LED Display Panel
2. Control Panel
3. Air Outlet
4. Supply Cord
5. Base
6. Remote Control

Control Panel

1. Sleep Wind Indicator
2. Natural Wind Indicator
3. Normal Wind Indicator
4. LED
5. Celcius Indicator

6. Timer Indicator
7. Oscilate Indicator
8. Fan Speed Button
9. Mode Button
10. On/Off Button
11. Timer Button
12. Oscillation Button/
Wi-Fi Button

Intended Use

Your BLACK+DECKER BXFT50008GB 36" Smart Tower Fan has been designed for cooling small and medium spaces.

This appliance is intended for indoor household use only.

Thank you for choosing BLACK+DECKER. We hope that you will enjoy using this product for many years.

Safety Instructions

▲WARNING: Read all safety warnings and all instructions. Failure to follow the warnings and instructions listed below may result in electric shock, fire and/or serious injury.

- ◆ Read this manual carefully before using the appliance.
- ◆ The intended use is described in this manual.
- ◆ The use of any accessory or attachment or the performance of any operation with this appliance other than those recommended in this instruction manual may present a risk of personal injury.
- ◆ Retain this manual for future reference.
- ◆ **▲WARNING:** When using mains-powered appliances, basic safety precautions, including the following, should always be followed to reduce the risk of fire, electric shock, personal injury and material damage.

Using Your Appliance

Please read the operating instructions carefully before using your tower fan for the first time.

- ◆ Check that the voltage of the main circuit corresponds with the rating of the appliance before operating.
- ◆ DO NOT let the cable hang over the edge of a table or counter or let it come into contact with any hot surfaces.
- ◆ The use of accessory attachments is not recommended by the appliance manufacturer, apart from those supplied with this product.
- ◆ DO NOT pull the plug out by the cable as this may damage the plug and/or the cable.
- ◆ DO NOT use this product for anything other than its intended use.
- ◆ DO NOT carry the appliance by the supply cord.
- ◆ DO NOT use the appliance outdoors.
- ◆ DO NOT operate with wet hands.
- ◆ Use of an extension cable with this appliance is not recommended. However, if it is necessary to use an extension lead, ensure that the lead is suited to the power consumption of the appliance to avoid overheating of the extension cable, appliance or plug point. DO NOT place the extension cable in a position where it can be pulled on by children or animals or tripped over.

- ◆ The manufacturer does not accept responsibility for any damage or injury caused by improper or incorrect use, or for repairs carried out by unauthorised personnel.

Safety Of Others

- ◆ Close supervision is necessary when any appliance is used near children.
- ◆ Children should not play with the appliance.
- ◆ This appliance can be used by children aged from 8 years and above and persons with reduced physical, sensory or mental capabilities or lack of experience and knowledge if they have been given supervision or instruction concerning use of the appliance in a safe way and understand the hazards involved. Cleaning and user maintenance shall not be made by children without supervision.
- ◆ Take care when any appliance is used near pets.
- ◆ DO NOT allow the cord to become twisted.

After Use

- ◆ While cleaning, DO NOT use a wet cloth or use water on any part of the unit, as this may cause a short circuit or electrical shock.
- ◆ Keep this unit clean. DO NOT allow objects to enter the ventilation opening as this may cause electric shock, or damage to the unit.
- ◆ Check all inlets and outlets regularly for accumulated dust.
- ◆ Disconnect the unit from the mains outlet when it is not in use, or before relocating or cleaning it.
- ◆ Switch off and remove the plug from the socket before leaving the appliance unattended and before changing, cleaning or inspecting any parts of the appliance.
- ◆ When not in use, the appliance should be stored in a dry place. Children should not have access to stored appliances.

Inspections And Repairs

- ◆ Do not attempt to dismantle, repair or remould any part of the unit. This should only be done by a qualified service agent. Even the change of supply cord should be done by a qualified person.

- ◆ In the unlikely event the appliance develops a fault, stop using it immediately and seek advice from an authorised Black + Decker service centre.
- ◆ In case of technical problems, switch off the product and DO NOT attempt to repair it yourself. Return the appliance to an authorised BLACK + DECKER service facility for examination, adjustment or repair. Always insist on the use of original spare parts. Failure to comply with the above mentioned precautions and instructions, could affect the safe operation of this product. Further information about authorised BLACK + DECKER service facilities can be found on www.2helpu.com
- ◆ Do not put heavy objects on the appliance.
- ◆ Do not tip the unit on its side.
- ◆ Never insert any other objects into the unit body to avoid any hazard or unit failure.
- ◆ Do not put the unit close to heat-generating devices or near flammable and dangerous materials.
- ◆ If the supply cord is damaged, it must be replaced by the manufacturer or its service agent or a similarly qualified person in order to avoid hazard.
- ◆ The appliance must be positioned so that the plug is accessible.
- ◆ For optimal airflow circulation, leave a distance of at least 1 metre around the appliance on every side. Always direct the airflow in order to optimize cooling. Avoid corners, small objects and other surfaces or objects which may impede the airflow.

Additional safety instructions for Air Coolers and Fans.

- ◆ Always operate the appliance on a smooth, even, stable surface. Do not place the unit on a hot surface.
- ◆ Ensure the unit is switched off after use.
- ◆ Do not immerse cables, plugs, or any part of the appliance in water or any other liquids.
- ◆ Operate the unit only at the voltage specified.
- ◆ Do not use the unit near open windows, as contact with rain and other natural elements could cause an electrical hazard.
- ◆ Do not leave the unit unattended when plugged in. Always unplug the unit when not in use.
- ◆ Do not locate the unit where it may fall into a bathtub or other water container.

⚠WARNING: Do not place the unit on or near a hot gas electric burner.

Electrical safety

⚠WARNING: Before use, check that the mains voltage corresponds to the voltage on the rating plate.

- ◆ Appliance plugs must match the outlet. Never modify the plug in any way.
- ◆ Do not use any adapter plugs with this appliance. Unmodified plugs and matching outlets will reduce the risk of electric shock.
- ◆ To avoid the risk of electric shock, do not immerse the cord, plug or appliance in water or other liquid.

⚠WARNING: Before assembling, switch the appliance off and remove the plug from the socket.

Mains plug replacement

⚠WARNING: The below section on mains plug replacement is for authorized service centre persons.

If a new mains plug needs to be fitted:

- ◆ Safely dispose of the old plug.
- ◆ Connect the brown lead to the live terminal in the new plug.
- ◆ Connect the blue lead to the neutral terminal.

Note! This product is class II double insulated (only 2 wires in the cord set), no connection is to be made to the earth terminal.

Follow the fitting instructions supplied with good quality plugs. Any replacement fuse must be of the same rating as the original fuse supplied with the product.

Features

1. LED Display Panel
2. Control Panel
3. Air Outlet
4. Supply Cord
5. Base
6. Remote Control

Control Panel

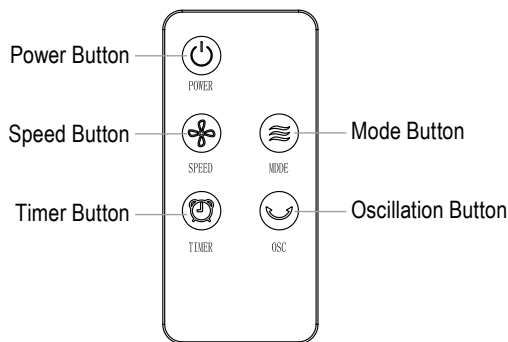
1. Sleep Wind Indicator
2. Natural Wind Indicator
3. Normal Wind Indicator
4. LED
5. Celcius Indicator
6. Timer Indicator
7. Oscilate Indicator
8. Fan Speed Button
9. Mode Button
10. On/Off Button
11. Timer Button
12. Oscillation Button/
Wi-Fi Button

Use

About the Controls

- ◆ 3 Cooling Modes – Normal, Natural and Sleep
- ◆ 5 Fan Speeds
- ◆ 12 Hour Timer (Weekly Timer on App)
- ◆ Oscillation Function

Remote Control



Installing the Battery

⚠WARNING: Danger of explosion if battery is incorrectly replaced.

⚠WARNING: DO NOT INGEST BATTERY; CHEMICAL BURN HAZARD. This product contains a coin/button cell battery. If the coin/button cell battery is swallowed, it can cause severe internal burns in just 2 hours and can lead to death.

- ◆ Keep new and used batteries away from children. If the battery compartment does not close securely, stop using the product and keep it away from children.
- ◆ If you think batteries might have been swallowed or placed inside any part of the body, seek immediate medical attention.
- ◆ If the coin cell battery contents come into contact with the skin, immediately wash area with mild soap and water. If coin cell battery liquid gets into the eye, rinse water over the open eye for 15 minutes or until irritation ceases. If medical attention is needed, the battery electrolyte is composed of an organic solvent and lithium salts.
- ◆ DO NOT incinerate or dispose of batteries together with household waste material! A battery that has reached the end of its life must be collected separately and returned to an environmentally compatible recycling facility.

Before First Use

Note! Read all instructions and safety information carefully before first use. Please retain this information for future reference.

- ◆ Remove your appliance from the packaging.
- ◆ Check that there is no damage to the cord or any visible damage to the body or accessories.
- ◆ Dispose of the packaging in a responsible manner.

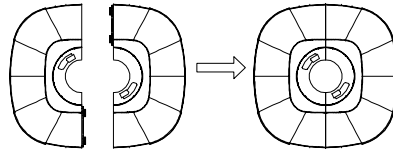
To Begin Using Your Fan

- ◆ Start by installing the battery.
- ◆ To install the battery, first detach the battery compartment from the remote. To do this, place a thumb or small object on the indented area on the underside of the battery compartment and push it gently inwards while simultaneously pulling the compartment away from the body of the remote.
- ◆ Insert one CR2025 battery into the battery compartment, taking care to ensure the positive polarity is facing upwards.
- ◆ Once the battery is in place, slide the battery compartment back into the remote. It will automatically lock into place and secure the battery inside.

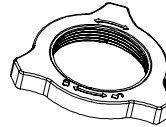
Assembling Your Fan

▲WARNING: Before performing any assembly or maintenance, switch the unit off and remove it from the power supply.

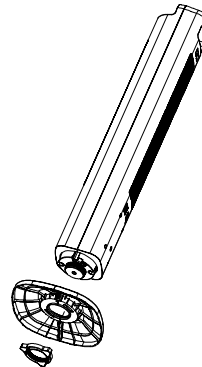
- ◆ Carefully remove the fan from the carton and place the base flat on the floor.
- ◆ Connect both halves of the unit base together until they click into place, as shown below.



- ◆ Unscrew the locking nut from the underside of the unit, turning counter clockwise until free.



- ◆ Turn the main unit upside down and thread the unit's power cord through the central hole in the base.
- ◆ Align the two prongs of the base with the two holes in the main unit and slide the base into place.



- ◆ Screw the locking nut clockwise to tighten and secure the fan body and fan base together.
- ◆ Your tower fan is now ready for normal use.

Turning the Unit On or Off

- ◆ Press the On/Off button on the remote control or the fan's control panel to turn the unit on. Press the button again while the fan is in operation to turn the unit off. There will be a sound prompt to indicate the unit has been turn on or off.

Mode Selection

- ◆ This fan is equipped with a choice of 3 modes: normal, natural and sleep. Press the Mode button on the remote control or the unit's control panel to switch between your desired cooling mode. Pressing the button repeatedly will cycle between the modes in the following order Normal, Natural, Sleep. There will be a sound prompt and the corresponding indicator will light up on the unit's display screen to show which mode has been selected.
- ◆ The unit's modes are as follows:
- ◆ In Normal mode (☼), the unit will cool continuously at the desired speed.
- ◆ In Natural mode (🌿), the unit will automatically change wind speed between high, medium and low to simulate natural wind.
- ◆ In Sleep mode (☾*), the unit will gradually decrease its speed every 30 minutes until it is operating at low speed, then maintain a constant speed until turned off.

Speed Selection

There is a choice of 5 wind speeds: 1, 2, 3, 4 or 5 with increasing wind speeds.

- ◆ Press the Fan Speed button (🌀) on the remote control or the unit's control panel to select your desired wind speed. Repeatedly press this button to cycle through the available speeds. There will be a sound prompt and the corresponding indicator (1, 2, 3, 4 or 5) will light up on the unit's display screen to show each speed has been selected.

Timer

The fan is equipped with a timer, with cooling cycles of up to 12 hours.

- ◆ Press the Timer Button on the remote control or the unit's control to set a timer in 1 hour increments. There will be a sound prompt and the corresponding timer will light up on the unit's display screen to show each timer has been selected.
- ◆ Each button press will increase the set timer by 1 hour as is displayed up to a maximum timer of 12 hours.
- ◆ Once the Timer has been set, the fan will operate on the selected setting for a set amount of time, then shut itself off automatically once it expires.

Note! Weekly timer can only be activated when using the Black+Decker Home App.

The Oscillation Function

This unit is complete with a horizontal oscillation function.

- ◆ Press the Oscillation button (↔) on the remote control or the unit's control panel to turn the oscillation function on. The corresponding indicator will light up on the unit's LED screen to indicate this function has been selected.
- ◆ Press the Oscillation button again while this function is activated to turn it off.

Connecting to Wi-Fi/Downloading The App

- ◆ To start using the 'BLACK+DECKER Home' app, begin by downloading it from the Apple App store or the Google Play store. Scan the QR Codes shown below to download the app directly from either store.
- ◆ Follow the instructions in the app to create an account and connect the Fan to a Wi-Fi network.

Note! Other app and device instructions are also available in the app.

- ◆ Once the app is downloaded, carry out the following steps to control the unit remotely through the corresponding smart device.



Connecting the App to the Unit

- ◆ Install the "BLACK+DECKER Home" app and create a user account, as detailed above.
- ◆ Plug the appliance in and long-press the Oscillation/Wi-Fi key for three seconds to activate the Wi-Fi function. There will be a sound prompt to indicate the Wi-Fi is on.
- ◆ Place the appliance within 5 metres of your router.
- ◆ As long as the Oscillation/Wi-Fi key has been pressed, the Wi-Fi indicator flashes. If there is no network configuration after 3 minutes, the status will be cancelled and the indicator light will go out. If you need to re-connect to Wi-Fi, long press the Oscillation/Wi-Fi key for 5 seconds to start the network configuration. The Wi-Fi indicator flashes again.

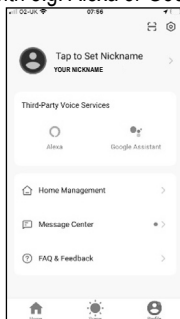
WIFI Connection

To connect the unit to the BLACK+DECKER Home app via Wi-Fi, carry out the following steps:

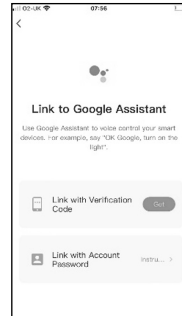
- ◆ Activate the Bluetooth and Wi-Fi functions in the corresponding smart phone or tablet device.
- ◆ Plug the appliance in and long-press the Oscillation/Wi-Fi key for three seconds to activate the Wi-Fi function. There will be a sound prompt to indicate the Wi-Fi is on.
- ◆ When the Wi-Fi indicator flashes, select the + symbol. Then 'Add Device' and follow the instructions on the display.
- ◆ If the Wi-Fi indicator flashes, the unit can be connected to the BLACK+DECKER Home App.

Connecting to Voice Assistants (Google)

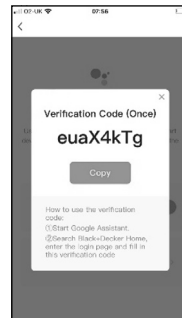
- ◆ Follow the steps mentioned in the instruction manual to connect to the Black+Decker Home App
1. Once the product is connected, tap the 'Profile' key, then select the smart device platform you wish to pair with e.g. Alexa or Google Assistant.



2. Next Steps for Google Assistant (Please ensure you are signed into your Google Home Account before proceeding)
3. A new screen will be displayed, showing 'Link to Google Assistant'. On this screen, tap the 'Get' button to pair the product with your smart device using the 'Link with Verification Code' function.



4. Copy the verification code.



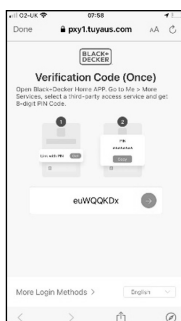
5. Open the Google Home app.
6. Tap 'Devices' and then 'Add'.



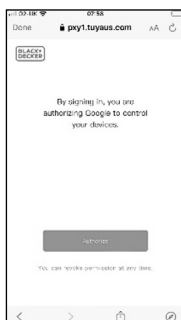
7. On the next screen, tap the 'Works with Google Home' button.



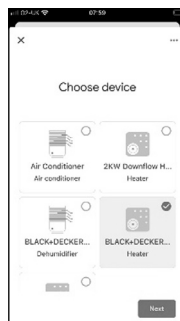
8. Finally, search for the Black+Decker Home app, and click on it. You will be directed to a Verification Code website for pairing products set up on the Black+Decker Home App with Google Assistant. Enter in the verification code from step 4.



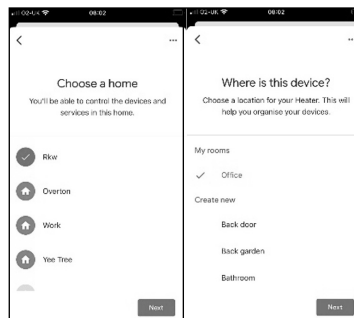
9. Next, tap 'Authorize' to link the Black+Decker Home app to your device. A pop-up message will indicate when the Black+Decker Home app has been linked.



10. A new screen will appear prompting you to 'Choose device'. This will show all current Black+Decker smart devices already connected via the Black+Decker Home App. Select which device you would like to connect and then tap 'Next'.



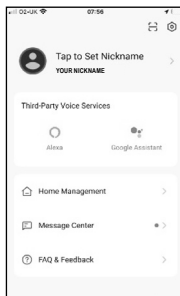
11. On the 'Choose a Home' screen, select the home you would like to link the device to, then tap 'Next'. The following screen will ask you to select 'Where is this device?'. Select the relevant part of the home, then tap 'Next'. The device will be added.



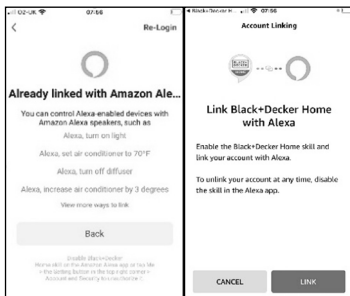
Note! if there are multiple Black+Decker smart devices connected to the Black+Decker App the next screen will ask you to 'Choose Device'. If this is not required, press the cross symbol.

Connecting to Voice Assistants (Amazon)

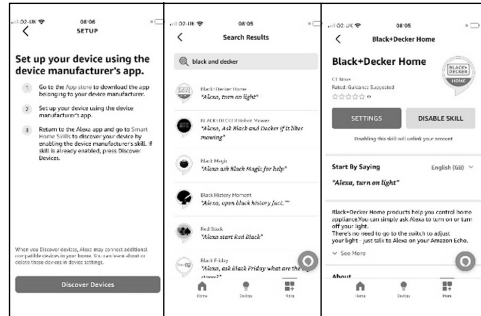
- ◆ (Please ensure you are signed into your Amazon Alexa app before proceeding).
 - ◆ Once the product is connected, tap the 'Profile' key, then select the smart device platform you wish to pair with e.g. Alexa or Google Assistant.
1. On the screen showing 'Amazon Alexa - Link your app account to your amazon account', tap 'Sign In With Amazon'.



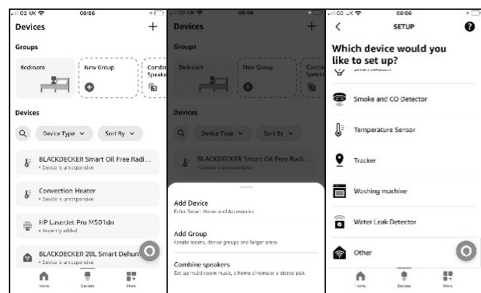
2. On the next screen, 'Link Black+Decker Home with Alexa', tap the 'link' button. If the screen shows the app is already linked, click 'Re-Login' and connect to Alexa again.



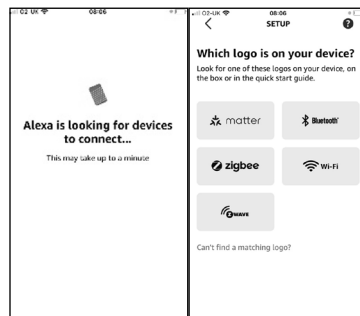
3. Amazon Alexa will now pair the Black+Decker Home app and all its connected devices with Amazon Alexa.
4. To add further devices, go back to the Black+Decker Home app and connect the device, as instructed in the corresponding section of this instruction manual. Once this is done, return to the Amazon Alexa app, go to the 'Smart Home Skills' menu and ensure the Black+Decker Home skill is enabled. If the skill is disabled, press the 'Enable' button to activate it.



5. If the skill is already enabled, go to the 'Devices' screen, tap the + icon, tap 'Add Device' and scroll to 'Other'.



6. Select 'Wi-Fi' and then tap 'Discover'. Alexa will search for the device (this could take up to a minute).



7. Once the device is discovered, tap 'Next' to add it to the automatic pairing list for the 'Black + Decker Home' app.

Configuring Different SSD Bands for 2.4GHz

- ◆ If your router supports multiple 2.4 GHz bands, but only one Wi-Fi name is displayed on the Wi-Fi search page of your mobile phone, perform these steps:
- ◆ Go to the Wireless page of the router. (The entry address is usually provided on the label attached to the back of the router).
- ◆ Go to the 2.4 GHz setting page, and set the Wi-Fi name (SSID) to XXX-2.4G, where xxx indicated the Wi-Fi name. Save setting.
- ◆ When the preceding settings are complete, the new Wi-Fi names will appear on the Wi-Fi settings page of your mobile phone.

Note! After the Wi-Fi names are changed, you need to reconnect the devices that use this wireless router. The password remains the same if it has not been changed.

Using the App

Once the app is downloaded, carry out the following steps to control the unit remotely through the corresponding smart device.

- ◆ Tap the Power On/Off key on the app's main screen to turn the unit On or Off.
- ◆ Tap the 'Mode' key on the app's main screen. Choose from the drop down list which Mode to select.
- ◆ Tap the 'Timer' key on the app's main screen. Choose from the drop down list which duration timer to be set for.
- ◆ Tap the 'Swing' key on the app's main screen. This will turn oscillation on or off.
- ◆ Tap the 'Speed' key on the app's main screen. Choose from the drop down list which fan speed to set.

Cleaning and maintenance

▲WARNING: Before cleaning and maintenance, switch the appliance off and remove the plug from the socket, to prevent electric shock.

- ◆ DO NOT immerse any part of the appliance, power cord or plug in liquids.
- ◆ Use a soft damp cloth to wipe the surface. Avoid using detergent, spray or chemicals as these may cause damage to the appliance.
- ◆ Clean the inlet and outlet vents with a standard household vacuum.
- ◆ DO NOT use water to clean these parts of the fan.
- ◆ DO NOT disassemble the fan for cleaning.
- ◆ DO NOT immerse the fan in water and never allow water to enter the motor housing or any other part of the appliance.
- ◆ DO NOT use gasoline, paint thinner or other chemicals to clean the fan.

Storage

If not in use for an extended period of time, store your appliance by following these steps:

- ◆ Unplug your appliance.
- ◆ Remove the battery from the remote control before storage.
- ◆ Store your appliance in a clean and dry place.
- ◆ Keep the air outlet protected from dirt and dust during storage.

Protecting the environment



Separate collection. Products and batteries marked with this symbol must not be disposed of with normal household waste.

Products and batteries contain materials that can be recovered or recycled, reducing demand for raw materials. Please recycle electrical products and batteries according to local provisions. Further information is available at www.2helpU.com.

Technical data

		BXFT50008GB
Input voltage	V ~	220-240
Frequency	Hz	50/60
Power input	W	45
Weight	KG	2.1

Product Guarantee

This product comes with a 2 Year guarantee from the original date of purchase. If any defect arises due to faulty materials or workmanship, the faulty products must be returned to the place of purchase. Refund or replacement is at the discretion of the retailer. This guarantee is in addition to and in no way prejudices your statutory rights.

The Following Conditions Apply:

- ◆ The product must be returned to the retailer with proof of purchase or a receipt within the 1st year of purchase. For any product related issues after 12 months please contact our customer services team.
- ◆ The product must be installed and used in accordance with the instructions contained in this instruction guide.
- ◆ It must be used only for domestic purposes.
- ◆ It does not cover wear and tear, damage, misuse or consumable parts.
- ◆ This guarantee is valid in the UK and Republic of Ireland.

Product Security and Telecommunications Infrastructure (PSTI)

Your Black+Decker 36" Smart Tower Fan is an interconnected product which uses both wifi and Bluetooth to connect to the BLACK+DECKER Home App. As more devices in the home become connected to the internet, cyber security of the Internet of Things (IoT) is increasingly important to protect end users.

The Black+Decker 36" Smart Tower Fan will deliver an updated experience on a regular basis including security patches. It is strongly recommended for best performance and security that all maintenance updates should be accepted as soon as possible. The 36" Smart Tower Fan will continue to update until the specified date found within the Software Update website address. Please note updates may well continue after the date but it is likely that they will be less frequent. For further information please visit the below links.

For Security Reporting, Black+Decker actively tries to identify and reduce potential vulnerabilities during the products lifetime and in this effort we value input on actual or potential vulnerabilities reported by yourself.

If you believe you have discovered a vulnerability in a Black+Decker product please follow the Security Report website address below and follow the steps to complete the Security Reporting Form. Further information regarding the process is referenced on our website.

Security Reporting Website Address:
www.rkw ltd.com/#/security-reporting

Software Updates Website Address:
www.rkw ltd.com/#/software-updates



ENGLISH

(Original instructions)

For all customer service enquires please contact us below;

RKW,

Sutton House,

Berry Hill Road,

Stoke-on-Trent,

ST4 2NL

Email blackanddecker@rkwltd.com

Tel 0333 220 6089

Black & Decker® and BLACK+DECKER™ and the Black & Decker® and BLACK+DECKER™ logos are registered trademarks of The Black & Decker® Corporation and are used under licence. All rights reserved. Imported and Distributed by RKW LTD, Sutton House, Berry Hill Industrial Estate, Berry Hill Road, Stoke-on-Trent, ST4 2NL

Model Identifier(s): BXFT50008GB			
Item	Symbol	Value	Unit
Maximum fan flow rate	F	22.78	m ³ /min
Fan Power input	P	36.5	W
Service Value	SV	0.76	(m ³ /min)/W
Standby power consumption	PSB	0.16	W
Fan sound power level	LWA	53.68	dB(A)
Maximum air velocity	c	3.68	m/sec
Seasonal electricity consumption	Q	11.86	kWh/a
Contact Details:	RKW LTD, Sutton House, Berry Hill Industrial Estate, Berry Hill Road, Stoke-on-Trent, ST4 2NL		



01/2024

